



Cooperative ITS Corridor – Joint Deployment

C-ITS Corridor: Operational Framework

31. March 2017

Dr. Christian Leitzke
Hessen Mobil – Road and Traffic Management



Ministry of Infrastructure and the
Environment of the Netherlands



Bundesministerium
für Verkehr und
digitale Infrastruktur

bmvi
Bundesministerium
für Verkehr,
Innovation und Technologie

The distribution of the document “*Framework to construct operational concepts/ manuals for cooperative systems - Part 1: Fundamentals*” is not possible at this time because the voting with the Federal States is in progress.

Therefore, you will receive this presentation with the core statements and the table of contents of the document. The document will be available later.

Going live with the C-ITS Corridor poses some major challenges...

- C-ITS Corridor is not a mere research project, it is deployment
- Reliability of system and processes essential prior to deployment
- Smooth cooperation with different stakeholders (authorities, automotive industry, etc)
- Cooperation across regional borders in the Federal State of Germany
- Cooperation across national borders

- ➔ **A framework is needed that delivers:**
- **A common understanding of the processes to be implemented**
 - **A clear outline of responsibilities**

In view of the trial operation and system roll-out of the C-ITS Corridor in Germany, Hessen Mobil began work on an operational framework for Cooperative Systems in the 4th quarter of 2015.

The operational framework includes:

- generic role model
- definitions and assignments of processes
- definitions of interfaces with external parties
- allocation of responsibilities for the German part of the C-ITS Corridor.
- a framework for a generic operating concept

Scope

- Operational framework applies to all public road operators that have cooperative systems in use and the federal government as overall responsible entity.
- It describes the requirements for interfaces to private stakeholders, third-parties and foreign states/ road operators.

Part 1: Fundamentals

- Addresses Federal Government, states and road operators
- Environment, role definition, definition of tasks and responsibilities
- Assignment of roles to actors
- Derivation of process chains for services
- Requirements to external interfaces
- Criteria for design a framework of an operating concept

Operational framework for Cooperative Systems

Part 2: Framework of an operational concept

- Addresses Federal Government, states and road operators
- Detailed elaboration of processes
- Detailed description of functions in tools and the usage of standard forms
- Detailed description of interfaces and description of general instructions

Operational concepts / manuals

- Addresses employees of actors
- Detailed elaboration of processes
- Assignment of roles to positions
- Detailed description of functions in tools and the usage of standard forms
- Adaption of processes to the organization of the actor
- Description of specific instructions

1. Introduction

Includes: Background; Document structure and field of application; Methods und procedures; Reference documents; Design area

2. Process chains of the cooperative systems

Includes: Description of the cooperative systems; Process chains: generic, 1st and 2nd cooperative service; status messages and certificate requests

3. Operational roles and interfaces

Includes: Roles and committees in the Service Operation ; Roles and committees in the Service Strategy; Operational external interfaces

4. Technical requirements to support the operation

5. Design of operational processes

6. List of abbreviation

7. Glossary

8. Annex 1

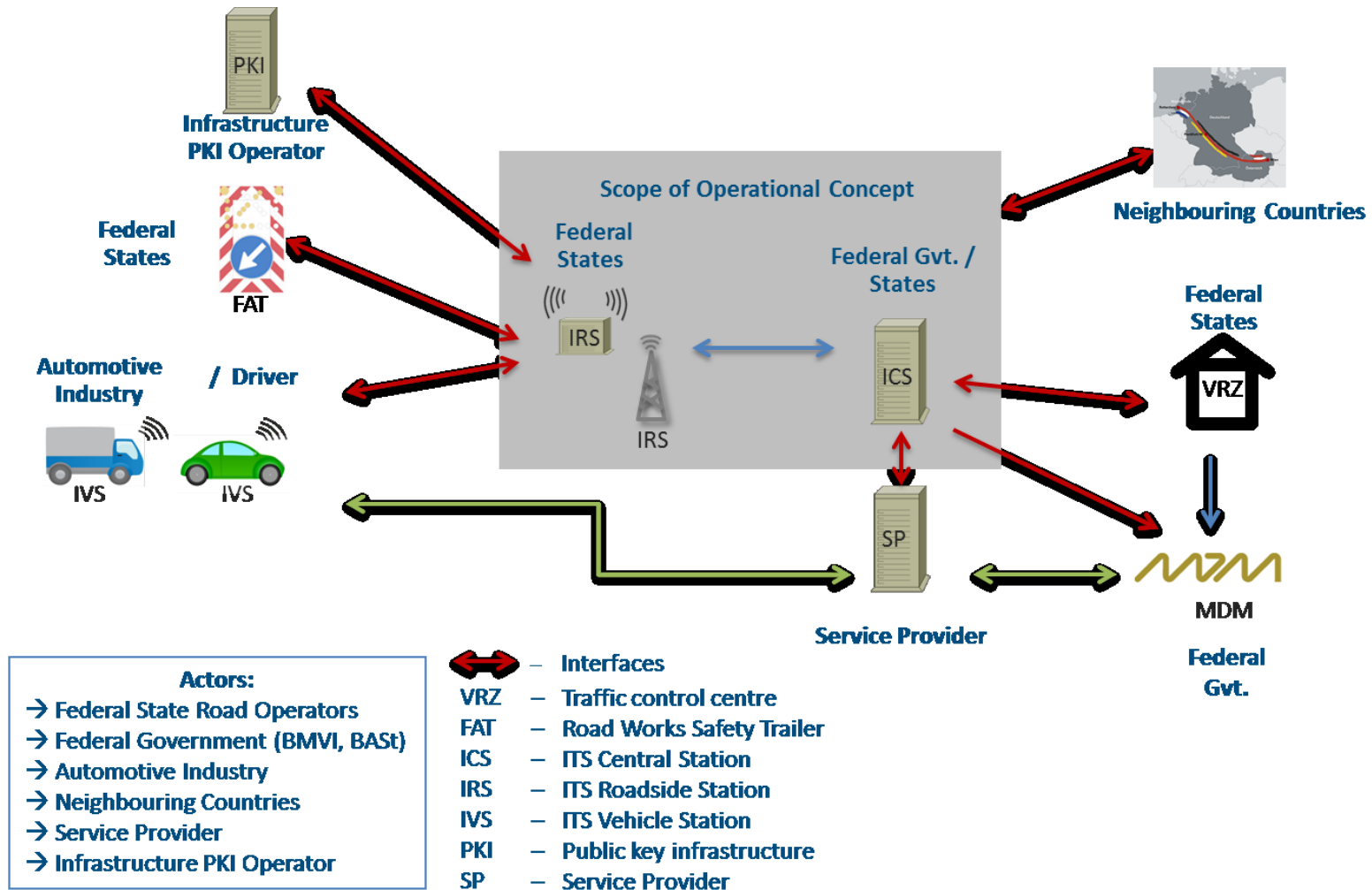
Includes: Operational roles and their tasks
Roles; Assignment of operational processes to the roles

9. Annex 2

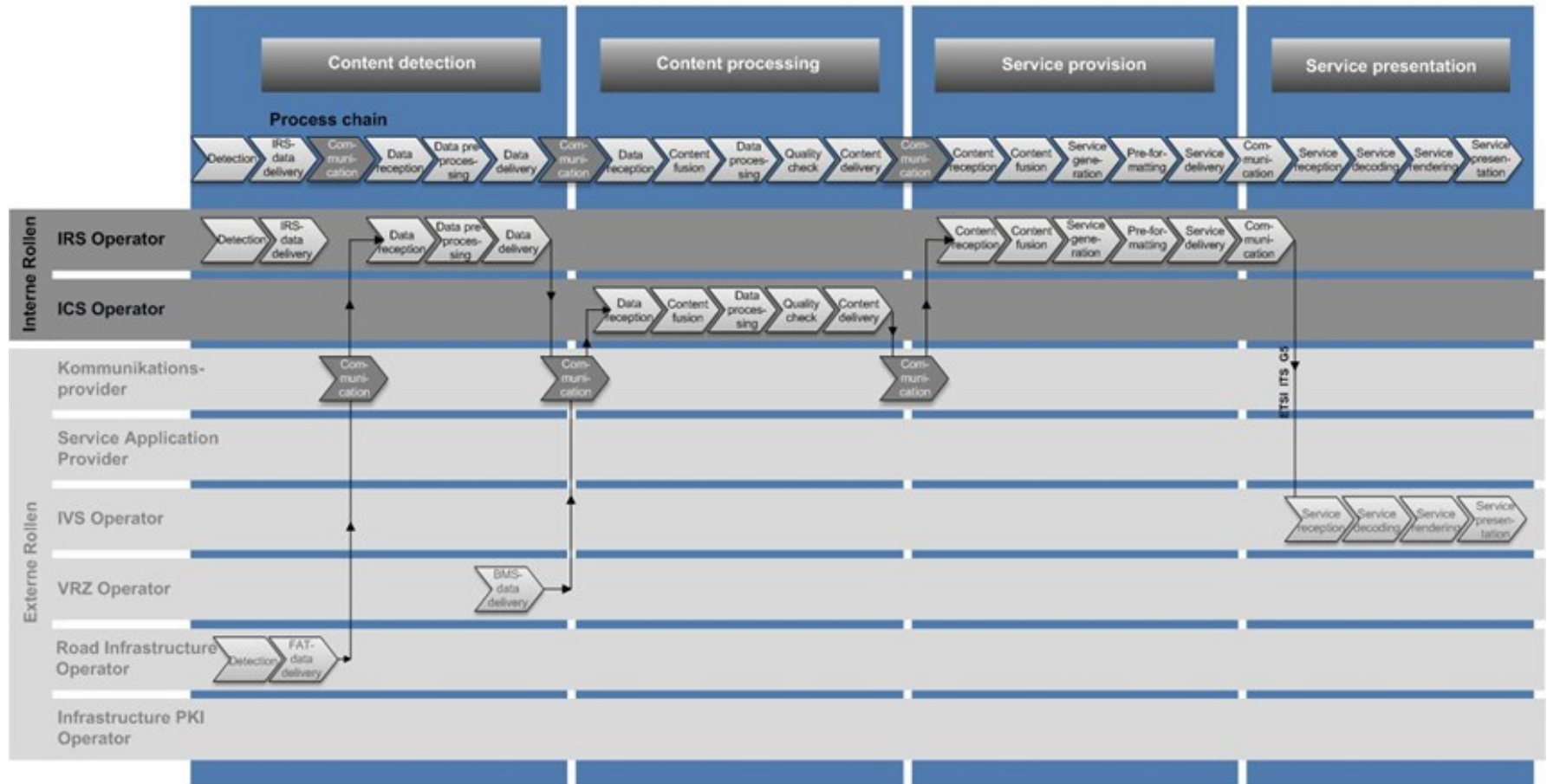
Includes: Operational processes and sub-roles

Methodology and approach of the operational framework

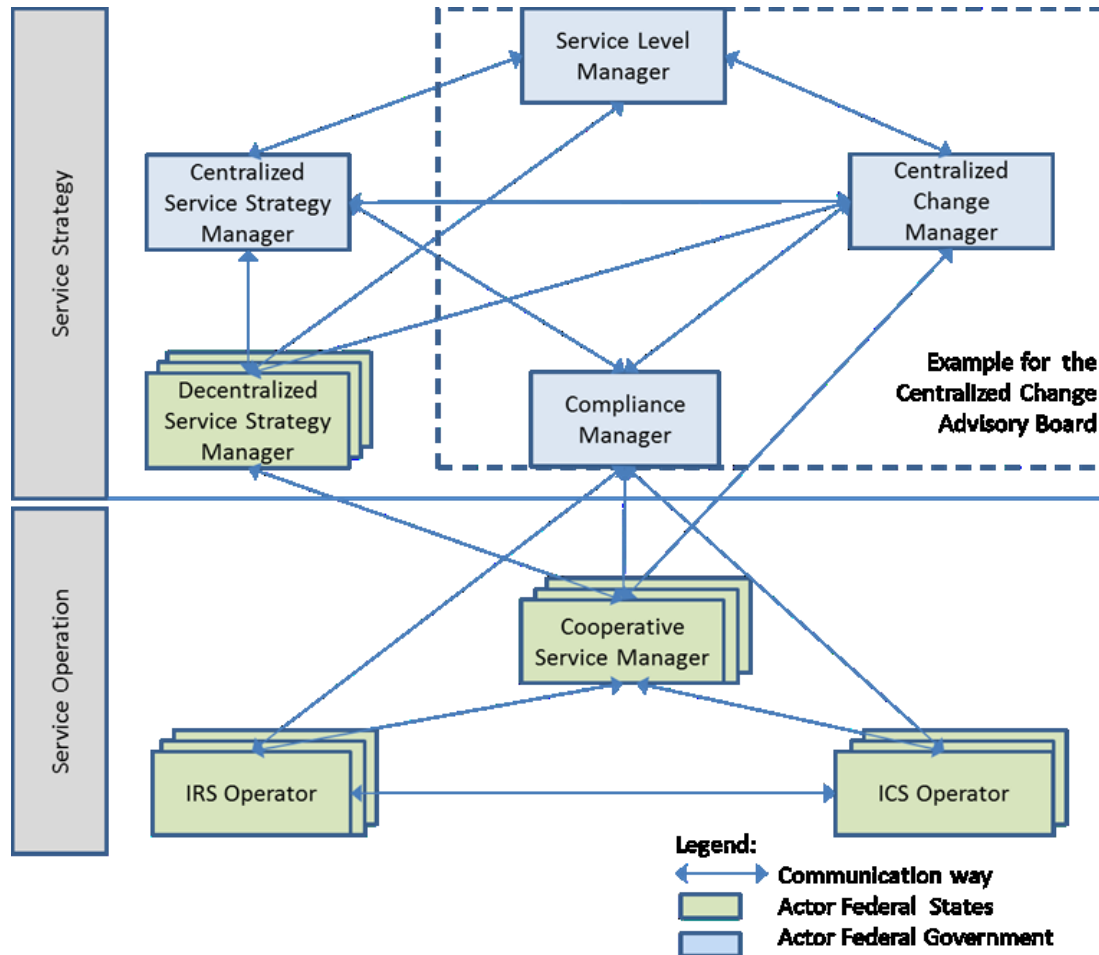
- Based on ITIL® V3 (IT Infrastructure Library) and on ISO TS 17427
- Representation of process chains for services (end-to-end)
- Development of a generic role model
- Assignment of
 - tasks to roles
 - roles to actors
- Provision of an overview of basic operational processes, based on task catalogues (to be detailed in operating concepts)
- Proposal for a gradual, step-by-step approach, in order to design the most important operational processes first



1. Service/ Standard solution for short term Road Works Warning (RWW) Communication channels: ETSI ITS G5



Role Model & Communication between internal roles

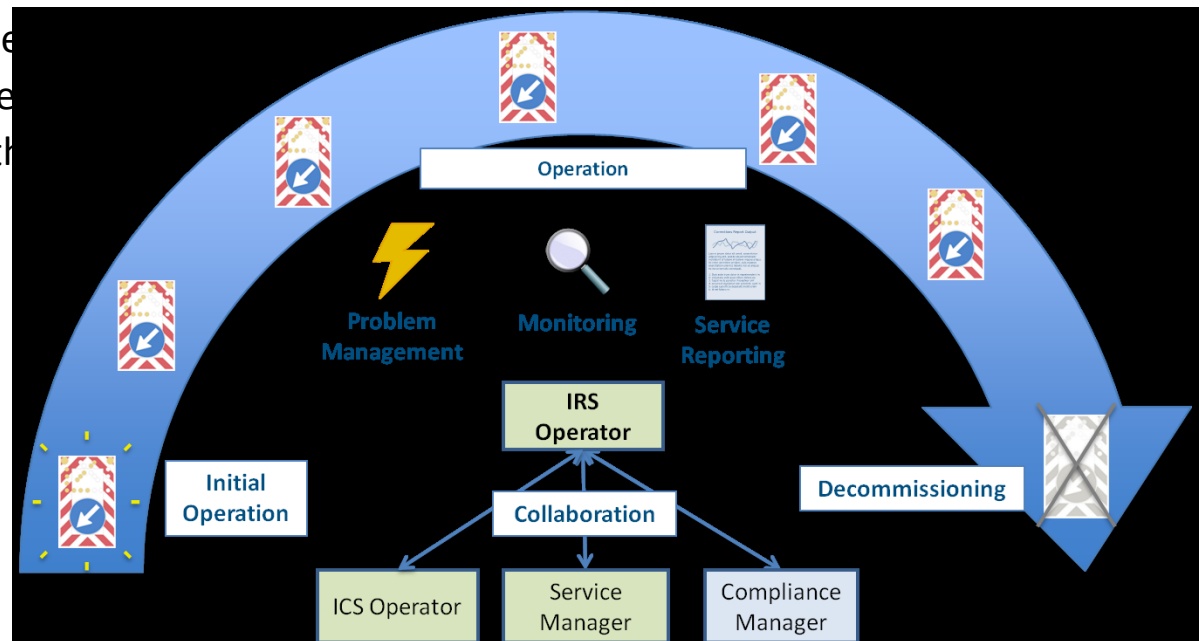


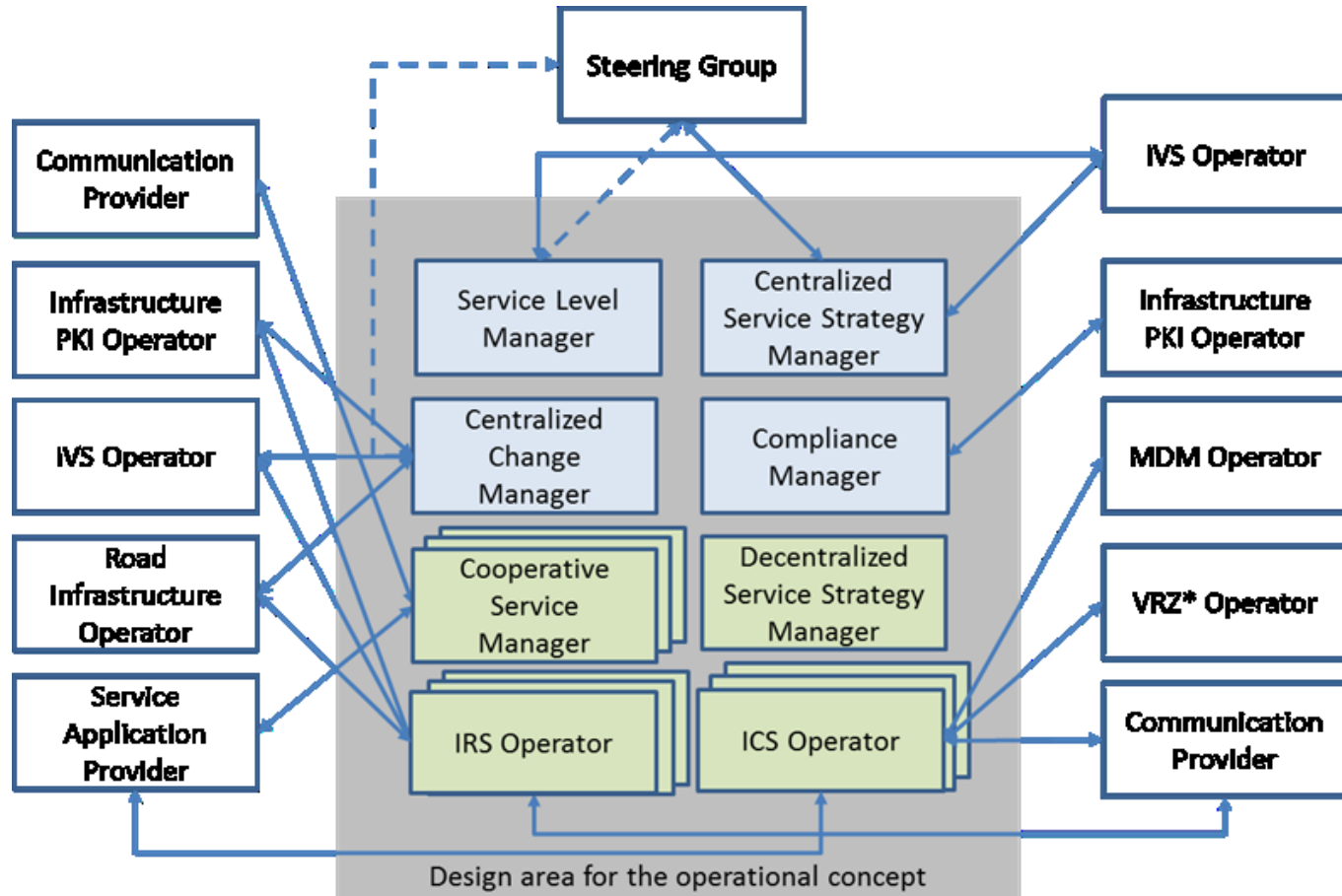
Sample Role *IRS Operator*: Role Characteristics

| Role | | | |
|---|-----------------------|---|---|
| <u>IRS Operator</u> The role IRS Operator has the task to guarantee the operation of the system component ITS Roadside Station in framework of the operation of cooperative systems. This is to be guaranteed in the self-sufficient mode (without communication with the assigned ICS) as well as in interaction with the ICS. | | | |
| Area | Actor | Interfaces to internal roles | Interfaces to external roles |
| Service Operation | German Federal States | ICS Operator Cooperative Service Manager Compliance Manager | Infrastructure PKI Operator IVS Operator Road Infrastructure Operator Communication Provider |

Sample Role *IRS Operator*: Task Catalogue (excerpt)

- Initial Operation of IRS
- IRS operation
 - Monitoring
 - Service Reporting
 - Problem Management
 - Incident Management
 - Commissioning of the IRS
- collaboration with *Regional Change Management*
- collaboration with *Compliance Management*
- decommissioning of IRS
- ...





Legend:

- communication way
- communication way (if needed)
- if present



Actor Federal State

Actor Federal Government



external roles und committees

Sample Role *IVS Operator*: Role Characteristics

| Role | |
|--|---|
| <u>IVS Operator</u> The role IVS Operator is responsible for the acceptance of data, which are transmitted by the IRS, and for the transmission of the data from the IVS. The representation of the information in the vehicle is also a task of the IVS Operator. | |
| Area | Interfaces to external roles |
| OEM | IRS Operator Centralized Change Manager Centralized Service Strategy Manager Service Level Manager |

Requirements for the role IVS Operator to guarantee the operational cooperation with the roles of public actors [roles inside the scope]:

- Provision of contact persons for operational interests on the part of the infrastructure operators

- **Realization of the Incident Management in responsibility of the IVS Operators**
 - Reporting the functional, technical and organizational incidents which have an effect on the whole cooperative system
 - Acceptance of incident messages which have an effect on the whole cooperative system
- **Realization of the incident analysis in responsibility of the IVS Operator**
- **Participation in the Centralized Change Management**
 - Contribution of change requests
 - Rating of change requests
- **Participation in the common Releasemanagement**
 - Development of a common release system
 - Coordination of the rolling-out of new releases (when? And how?)
- **Participation in the common Centralized Demand Management**
 - Participation in the development of new cooperative services, standards
 - Participation in the rating of new cooperative services, standards
- **Arrangement and conversion of SLA**
- **Committee participation (e. g., Steering Group)**
- **Guarantee the passing on of information and processing the information to the final user (driver)**
- **Feedbacks for quality and availability of the used (part) services**
- **Application of a compatible PKI Infrastructure**



Thank you for your kind attention Suggestions or Questions?

Project lead Cooperative ITS Corridor

Federal Ministry of Transport and Digital
Infrastructure

Dipl.-Ing. Konstantin Sauer
Robert-Schuman-Platz 1, 53175 Bonn
Ref-StB12@bmvi.bund.de

Project office Cooperative ITS Corridor

c/o K&S GmbH Projektmanagement

Dr. Andreas Kreutzer
Fon +49 (241) 160 1959,
Fax +49 (241) 160 1963,
office@c-its-corridor.de

www.c-its-corridor.de



Ministry of Infrastructure and the
Environment of the Netherlands



Bundesministerium
für Verkehr und
digitale Infrastruktur

